

**BID TABULATION FOR:**

CONSTRUCTION OF THE WATER, SANITARY SEWER AND DRAINAGE & PAVING AND APPURTENANCES TO SERVE MIDLINE SECTION 3  
BAYBROOK MUNICIPAL UTILITY DISTRICT NO. 1  
CITY OF HOUSTON E.T.J., HARRIS COUNTY, TEXAS  
MARCH 19, 2025  
LJA ENGINEERING, INC.  
E. MURPHY  
MARCH 19, 2025  
2535-2320 (9.2)

**BID OPENING DATE:**

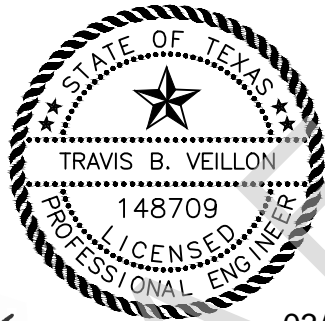
**BID OPENING LOCATION:**

**TABULATION BY:**

**TABULATION DATE:**

**LJA JOB NO.**

BIDDER NAME	BASE BID	PROPOSED DURATION (DAYS)
1) R CONSTRUCTION CIVIL, LLC	\$1,698,592.50	40 \ 50
2) DACO PAVING, INC.	\$1,830,000.00	75 \ 85
3) CE BARKER LTD.	\$1,971,871.87	90 \ 110
4) HURTADO CONSTRUCTION COMPANY	\$1,998,168.88	60 \ 70
5) PRINCIPAL SERVICES, LTD	\$2,024,545.15	65 \ 85



*Travis Veillon*

03/20/2025

I, Travis Veillon, PE, hereby certify these bid tabulations to be true and correct.

**BID TABULATION FOR:**

**CONSTRUCTION OF THE WATER, SANITARY SEWER AND DRAINAGE & PAVING AND APPURTENANCES TO SERVE MIDLINE SECTION 3**

**BID OPENING DATE:**  
**BID OPENING LOCATION:**  
**TABULATION BY:**  
**TABULATION DATE:**  
**LJA JOB NO.**

**BAYBROOK MUNICIPAL UTILITY DISTRICT NO. 1**  
**CITY OF HOUSTON E.T.J., HARRIS COUNTY, TEXAS**  
**MARCH 19, 2025**  
**LJA ENGINEERING, INC.**  
**E. MURPHY**  
**MARCH 19, 2025**  
**2535-2320 (9.2)**

NO.	ITEM DESCRIPTION	UNIT	QTY	1) R CONSTRUCTION CIVIL, LLC		2) DACO PAVING, INC.		3) CE BARKER LTD.		4) HURTADO CONSTRUCTION COMPANY	
				UNIT COST	TOTAL	UNIT COST	TOTAL	UNIT COST	TOTAL	UNIT COST	TOTAL
<b>WATER ITEMS - MIDLINE SECTION 3</b>											
1.	12" PVC WATER LINE, C-900, DR 18, CLASS 235, INCLUDES FITTINGS, BEDDING AND BACKFILL, ALL DEPTHS, COMPLETE IN PLACE	LF	1000	\$64.00	\$64,000.00	\$68.00	\$68,000.00	\$83.00	\$83,000.00	\$75.00	\$75,000.00
2.	8" PVC WATER LINE, C-900, DR 18, CLASS 235, INCLUDES FITTINGS, BEDDING AND BACKFILL, ALL DEPTHS, COMPLETE IN PLACE	LF	1387	\$35.00	\$48,545.00	\$42.00	\$58,254.00	\$48.00	\$66,576.00	\$40.00	\$55,480.00
3.	12" PVC RESTRAINED JOINT WATER LINE, C-900, DR 14, CLASS 305, INCLUDES RESTRAINED JOINT FITTINGS, BEDDING AND BACKFILL, ALL DEPTHS, COMPLETE IN PLACE	LF	230	\$107.00	\$24,610.00	\$105.00	\$24,150.00	\$130.00	\$29,900.00	\$98.00	\$22,540.00
4.	8" PVC RESTRAINED JOINT WATER LINE, C-900, DR 14, CLASS 305, INCLUDES RESTRAINED JOINT FITTINGS, BEDDING AND BACKFILL, ALL DEPTHS, COMPLETE IN PLACE	LF	237	\$59.00	\$13,983.00	\$61.00	\$14,457.00	\$75.00	\$17,775.00	\$68.00	\$16,116.00
5.	12" AWWA GATE VALVE & BOX, COMPLETE IN PLACE	EA	4	\$4,100.00	\$16,400.00	\$3,753.00	\$15,012.00	\$5,000.00	\$20,000.00	\$3,680.00	\$14,720.00
6.	8" AWWA GATE VALVE & BOX, COMPLETE IN PLACE	EA	4	\$2,300.00	\$9,200.00	\$2,081.00	\$8,324.00	\$2,500.00	\$10,000.00	\$1,988.00	\$7,952.00
7.	12" PLUG & CLAMP WITH 2" BLOW-OFF VALVE & BOX ASSEMBLY, COMPLETE IN PLACE	EA	1	\$1,600.00	\$1,600.00	\$1,772.00	\$1,772.00	\$2,500.00	\$2,500.00	\$1,418.00	\$1,418.00
8.	8" PLUG & CLAMP WITH 2" BLOW-OFF VALVE & BOX ASSEMBLY, COMPLETE IN PLACE	EA	1	\$1,600.00	\$1,600.00	\$1,564.00	\$1,564.00	\$2,400.00	\$2,400.00	\$1,308.00	\$1,308.00
9.	FLUSHING VALVE UNIT, INCLUDES APPROPRIATE TEE, FITTINGS, 6" GATE VALVE & BOX, AND LEAD PIPE, ALL DEPTHS, COMPLETE IN PLACE	EA	5	\$6,200.00	\$31,000.00	\$5,838.00	\$29,190.00	\$7,000.00	\$35,000.00	\$8,000.00	\$40,000.00
10.	WET CONNECTION OF PROPOSED 12" WATER LINE TO EXISTING WATER LINE, INCLUDES FITTINGS, ALL ADAPTERS AND CONNECTORS NECESSARY, AND REMOVAL OF EXISTING PLUG & CLAMP AND 2" BLOW-OFF VALVE & BOX, ALL DEPTHS, COMPLETE IN PLACE	EA	1	\$700.00	\$700.00	\$522.00	\$522.00	\$2,500.00	\$2,500.00	\$800.00	\$800.00
11.	TRENCH SAFETY SYSTEM FOR WATER LINE, INCLUDES ALL LATERAL LEADS, ALL SIZES, ALL DEPTHS, COMPLETE IN PLACE	LF	2806	\$1.00	\$2,806.00	\$0.02	\$56.12	\$1.00	\$2,806.00	\$1.00	\$2,806.00
12.	ADJUST THE EXISTING WATER VALVE, WATER MANHOLE, FIRE HYDRANT, AIR RELEASE VALVE, AND MANHOLE TO THE PROPOSED GRADES, COMPLETE IN PLACE	LS	1	\$200.00	\$200.00	\$2,606.00	\$2,606.00	\$3,500.00	\$3,500.00	\$8,000.00	\$8,000.00
<b>SUBTOTAL WATER ITEMS - MIDLINE SECTION 3</b>					<b>\$214,644.00</b>		<b>\$223,907.12</b>		<b>\$275,957.00</b>		<b>\$246,140.00</b>
<b>SANITARY SEWER ITEMS - MIDLINE SECTION 3</b>											
1.	10" PVC SEWER PIPE, ASTM D-2241, SDR 26, 8' - 12' CUT, INCLUDES BEDDING AND BACKFILL, COMPLETE IN PLACE	LF	1233	\$45.00	\$55,485.00	\$57.50	\$70,897.50	\$120.00	\$147,960.00	\$80.00	\$98,640.00
2.	8" PVC SEWER PIPE, ASTM D-2241, SDR 26, 8' - 12' CUT, INCLUDES BEDDING AND BACKFILL, COMPLETE IN PLACE	LF	1172	\$37.00	\$43,364.00	\$52.25	\$61,237.00	\$90.00	\$105,480.00	\$75.00	\$87,900.00
3.	LONG SIDE DOUBLE OR SINGLE 6" PVC PIPE SERVICE LEAD, ASTM D-2241, SDR 26, INCLUDES PIPE, CEMENT STABILIZED SAND BACKFILL, DROP STRUCTURE, STACK, RISER, WYE, PLUG, MARKER, AND ANY NECESSARY FITTINGS, ALL DEPTHS, COMPLETE IN PLACE	LF	826	\$54.00	\$44,604.00	\$74.00	\$61,124.00	\$100.00	\$82,600.00	\$78.00	\$64,428.00
4.	LONG SIDE DOUBLE OR SINGLE 8" PVC PIPE SERVICE LEAD, ASTM D-2241, SDR 26, INCLUDES PIPE, CEMENT STABILIZED SAND BACKFILL, DROP STRUCTURE, STACK, RISER, WYE, PLUG, MARKER, AND ANY NECESSARY FITTINGS, ALL DEPTHS, COMPLETE IN PLACE	LF	106	\$73.00	\$7,738.00	\$78.50	\$8,321.00	\$115.00	\$12,190.00	\$88.00	\$9,328.00

**BID TABULATION FOR:**

**CONSTRUCTION OF THE WATER, SANITARY SEWER AND DRAINAGE & PAVING AND APPURTENANCES TO SERVE MIDLINE SECTION 3**

**BID OPENING DATE:**  
**BID OPENING LOCATION:**  
**TABULATION BY:**  
**TABULATION DATE:**  
**LJA JOB NO.**

**BAYBROOK MUNICIPAL UTILITY DISTRICT NO. 1**  
**CITY OF HOUSTON E.T.J., HARRIS COUNTY, TEXAS**  
**MARCH 19, 2025**  
**LJA ENGINEERING, INC.**  
**E. MURPHY**  
**MARCH 19, 2025**  
**2535-2320 (9.2)**

NO.	ITEM DESCRIPTION	UNIT	QTY	1) R CONSTRUCTION CIVIL, LLC		2) DACO PAVING, INC.		3) CE BARKER LTD.		4) HURTADO CONSTRUCTION COMPANY	
				UNIT COST	TOTAL	UNIT COST	TOTAL	UNIT COST	TOTAL	UNIT COST	TOTAL
5.	SHORT SIDE SINGLE 6" PVC PIPE SERVICE LEAD, ASTM D-2241, SDR 26, INCLUDES PIPE, CEMENT STABILIZED SAND BACKFILL, DROP STRUCTURE, STACK, RISER, WYE, PLUG, MARKER, AND ANY NECESSARY FITTINGS, ALL DEPTHS, COMPLETE IN PLACE	EA	29	\$2,100.00	\$60,900.00	\$2,189.00	\$63,481.00	\$3,000.00	\$87,000.00	\$1,928.00	\$55,912.00
6.	STANDARD 4' DIAMETER PRECAST SANITARY SEWER MANHOLE, (0' - 8' DEPTH), INCLUDES ADJUSTMENTS, COMPLETE IN PLACE	EA	13	\$3,300.00	\$42,900.00	\$2,607.00	\$33,891.00	\$3,500.00	\$45,500.00	\$5,000.00	\$65,000.00
7.	EXTRA VERTICAL DEPTH FOR 4' DIAMETER SANITARY SEWER MANHOLE (OVER 8' DEPTH), COMPLETE IN PLACE	VF	41	\$180.00	\$7,380.00	\$209.00	\$8,569.00	\$350.00	\$14,350.00	\$138.00	\$5,658.00
8.	STANDARD 4' DIAMETER PRECAST SANITARY SEWER MANHOLE, SEALED AND VENTED, (0' - 8' DEPTH), INCLUDES PROTECTIVE INTERIOR COATING AND ADJUSTMENTS, COMPLETE IN PLACE	EA	1	\$8,500.00	\$8,500.00	\$5,236.00	\$5,236.00	\$8,500.00	\$8,500.00	\$4,988.00	\$4,988.00
9.	REMOVE AND OFFSITE DISPOSAL OF EXISTING 10" PLUG AND CONNECT PROPOSED 10" SANITARY SEWER, ALL DEPTHS, COMPLETE IN PLACE	EA	1	\$200.00	\$200.00	\$261.00	\$261.00	\$5,000.00	\$5,000.00	\$800.00	\$800.00
10.	VIDEO INSPECTION OF SANITARY SEWER, ALL SIZES, INCLUDES DIGITAL COPY, COMPLETE IN PLACE	LF	2405	\$2.00	\$4,810.00	\$2.00	\$4,810.00	\$2.75	\$6,613.75	\$1.00	\$2,405.00
11.	TRENCH SAFETY SYSTEM FOR SANITARY SEWER, INCLUDES ALL LATERAL LEADS, ALL SIZES, ALL DEPTHS, COMPLETE IN PLACE	LF	3874	\$1.00	\$3,874.00	\$0.02	\$77.48	\$1.00	\$3,874.00	\$1.00	\$3,874.00
<b>SUBTOTAL SANITARY SEWER ITEMS- MIDLINE SECTION 3</b>					<b>\$279,755.00</b>		<b>\$317,904.98</b>		<b>\$519,067.75</b>		<b>\$398,933.00</b>
<b>STORM SEWER ITEMS - MIDLINE SECTION 3</b>											
1.	24" RCP STORM SEWER, ASTM C-76, CLASS III, INCLUDES BEDDING AND BACKFILL, ALL DEPTHS, COMPLETE IN PLACE	LF	1704	\$90.00	\$153,360.00	\$100.00	\$170,400.00	\$100.00	\$170,400.00	\$98.00	\$166,992.00
2.	30" RCP STORM SEWER, ASTM C-76, CLASS III, INCLUDES BEDDING AND BACKFILL, ALL DEPTHS, COMPLETE IN PLACE	LF	237	\$124.00	\$29,388.00	\$120.00	\$28,440.00	\$120.00	\$28,440.00	\$124.38	\$29,478.06
3.	36" RCP STORM SEWER, ASTM C-76, CLASS III, INCLUDES BEDDING AND BACKFILL, ALL DEPTHS, COMPLETE IN PLACE	LF	383	\$175.00	\$67,025.00	\$172.00	\$65,876.00	\$165.00	\$63,195.00	\$163.68	\$62,689.44
4.	42" RCP STORM SEWER, ASTM C-76, CLASS III, INCLUDES BEDDING AND BACKFILL, ALL DEPTHS, COMPLETE IN PLACE	LF	8	\$269.00	\$2,152.00	\$235.00	\$1,880.00	\$225.00	\$1,800.00	\$211.18	\$1,689.44
5.	STAGE I - REINFORCED CONCRETE "B-B" INLET, (5' OPENING), INCLUDES INLET PROTECTION BARRIER FOR STAGE I INLET, ALL DEPTHS, COMPLETE IN PLACE	EA	19	\$1,300.00	\$24,700.00	\$1,356.00	\$25,764.00	\$1,500.00	\$28,500.00	\$1,500.00	\$28,500.00
6.	STAGE II - REINFORCED CONCRETE "B-B" INLET, (5' OPENING), ALL DEPTHS, COMPLETE IN PLACE	EA	19	\$3,000.00	\$57,000.00	\$2,711.00	\$51,509.00	\$1,700.00	\$32,300.00	\$2,500.00	\$47,500.00
7.	STAGE I - MODIFIED TYPE REINFORCED CONCRETE "C-1" INLET, (10' MINIMUM INSIDE OPENING), INCLUDES INLET PROTECTION BARRIER FOR STAGE I INLET, ALL DEPTHS, COMPLETE IN PLACE	EA	1	\$1,900.00	\$1,900.00	\$1,773.00	\$1,773.00	\$3,200.00	\$3,200.00	\$1,938.00	\$1,938.00
8.	STAGE II - MODIFIED REINFORCED CONCRETE TYPE "C-1" INLET, (10' MINIMUM INSIDE OPENING), ALL DEPTHS, COMPLETE IN PLACE	EA	1	\$3,100.00	\$3,100.00	\$2,920.00	\$2,920.00	\$2,500.00	\$2,500.00	\$2,858.00	\$2,858.00
9.	REINFORCED CONCRETE TYPE "C" MANHOLE FOR 42" STORM SEWER AND SMALLER, INCLUDES ADJUSTMENTS, ALL DEPTHS, COMPLETE IN PLACE	EA	17	\$3,100.00	\$52,700.00	\$3,128.00	\$53,176.00	\$3,300.00	\$56,100.00	\$4,000.00	\$68,000.00

**BID TABULATION FOR:**

**CONSTRUCTION OF THE WATER, SANITARY SEWER AND DRAINAGE & PAVING AND APPURTENANCES TO SERVE MIDLINE SECTION 3**

**BID OPENING DATE:**  
**BID OPENING LOCATION:**  
**TABULATION BY:**  
**TABULATION DATE:**  
**LJA JOB NO.**

**BAYBROOK MUNICIPAL UTILITY DISTRICT NO. 1**  
**CITY OF HOUSTON E.T.J., HARRIS COUNTY, TEXAS**  
**MARCH 19, 2025**  
**LJA ENGINEERING, INC.**  
**E. MURPHY**  
**MARCH 19, 2025**  
**2535-2320 (9.2)**

NO.	ITEM DESCRIPTION	UNIT	QTY	1) R CONSTRUCTION CIVIL, LLC		2) DACO PAVING, INC.		3) CE BARKER LTD.		4) HURTADO CONSTRUCTION COMPANY	
				UNIT COST	TOTAL	UNIT COST	TOTAL	UNIT COST	TOTAL	UNIT COST	TOTAL
10.	REINFORCED CONCRETE TYPE "C" MANHOLE FOR 48" STORM SEWER AND LARGER, INCLUDES ADJUSTMENTS, ALL DEPTHS, COMPLETE IN PLACE	EA	1	\$7,100.00	\$7,100.00	\$4,170.00	\$4,170.00	\$5,500.00	\$5,500.00	\$5,000.00	\$5,000.00
11.	BREAK INTO EXISTING STORM SEWER MANHOLE AND CONNECT PROPOSED 30" STORM SEWER, INCLUDES APPURTENANCES, ALL DEPTHS, COMPLETE IN PLACE	EA	1	\$650.00	\$650.00	\$261.00	\$261.00	\$1,200.00	\$1,200.00	\$2,800.00	\$2,800.00
12.	BREAK INTO EXISTING STORM SEWER MANHOLE AND CONNECT PROPOSED 36" STORM SEWER, INCLUDES APPURTENANCES, ALL DEPTHS, COMPLETE IN PLACE	EA	1	\$650.00	\$650.00	\$261.00	\$261.00	\$1,200.00	\$1,200.00	\$2,800.00	\$2,800.00
13.	BREAK INTO EXISTING STORM SEWER MANHOLE AND CONNECT PROPOSED 42" STORM SEWER, INCLUDES APPURTENANCES, ALL DEPTHS, COMPLETE IN PLACE	EA	1	\$650.00	\$650.00	\$751.00	\$751.00	\$1,500.00	\$1,500.00	\$2,800.00	\$2,800.00
14.	REMOVE EXISTING REINFORCED CONCRETE TYPE "E" INLET TOP AND REPLACE WITH TYPE "C" STORM MANHOLE TOP, FOR 42" STORM SEWER AND SMALLER, ALL DEPTHS, COMPLETE IN PLACE	EA	1	\$2,800.00	\$2,800.00	\$2,607.00	\$2,607.00	\$2,500.00	\$2,500.00	\$4,800.00	\$4,800.00
15.	TRENCH SAFETY SYSTEM FOR STORM SEWER, ALL SIZES, ALL DEPTHS, COMPLETE IN PLACE	LF	2332	\$1.00	\$2,332.00	\$0.02	\$46.64	\$1.00	\$2,332.00	\$1.00	\$2,332.00
<b>SUBTOTAL STORM SEWER ITEMS - MIDLINE SECTION 3</b>					<b>\$405,507.00</b>		<b>\$409,834.64</b>		<b>\$400,667.00</b>		<b>\$430,176.94</b>
<b>PAVING ITEMS - MIDLINE SECTION 3</b>											
1.	6" REINFORCED CONCRETE PAVEMENT, COMPLETE IN PLACE	SY	8295	\$51.00	\$423,045.00	\$53.00	\$439,635.00	\$45.00	\$373,275.00	\$54.00	\$447,930.00
2.	4" X 12" REINFORCED CONCRETE CURB, COMPLETE IN PLACE	LF	3500	\$4.00	\$14,000.00	\$4.50	\$15,750.00	\$4.00	\$14,000.00	\$4.00	\$14,000.00
3.	6" REINFORCED CONCRETE CURB, COMPLETE IN PLACE	LF	1300	\$4.00	\$5,200.00	\$4.50	\$5,850.00	\$4.00	\$5,200.00	\$4.00	\$5,200.00
4.	EMBANKMENT, INCLUDES DEMUCKING, REMOVING AND DISPOSING OF EXISTING UNSUITABLE MATERIAL BEFORE PLACING FILL, HAULING, STRIPPING, STOCKPILING STRIPPINGS, PROOFROLLING, RE-APPLICATION OF STRIPPINGS TO FILL AREA, PLACEMENT AND COMPACTION TO 95% STANDARD PROCTOR DENSITY, WITH MAXIMUM 8" LIFTS, AND FINAL GRADING, COMPLETE IN PLACE	CY	11400	\$1.75	\$19,950.00	\$3.50	\$39,900.00	\$3.50	\$39,900.00	\$3.88	\$44,232.00
5.	ROADWAY AND LOT EXCAVATION, INCLUDES STRIPPING, STOCKPILING AND RE-APPLICATION OF STRIPPINGS TO APPLICABLE AREAS, COMPLETE IN PLACE	CY	11400	\$1.75	\$19,950.00	\$1.50	\$17,100.00	\$1.00	\$11,400.00	\$3.88	\$44,232.00
6.	6" LIME/FLY ASH STABILIZED SUBGRADE MANIPULATION, COMPLETE IN PLACE	SY	9361	\$4.00	\$37,444.00	\$3.75	\$35,103.75	\$4.00	\$37,444.00	\$3.98	\$37,256.78
7.	HYDRATED LIME FOR 6" STABILIZED SUBGRADE PREPARATION, 3% BY DRY WEIGHT, AS REQUIRED BY SOIL CONDITIONS AND APPROVED BY GEOTECHNICAL ENGINEER, COMPLETE IN PLACE	TON	70	\$375.00	\$26,250.00	\$360.00	\$25,200.00	\$332.00	\$23,240.00	\$358.00	\$25,060.00
8.	FLY ASH FOR 6" STABILIZED SUBGRADE PREPARATION, 7% BY DRY WEIGHT, AS REQUIRED BY SOIL CONDITIONS AND APPROVED BY GEOTECHNICAL ENGINEER, COMPLETE IN PLACE	TON	162	\$155.00	\$25,110.00	\$135.00	\$21,870.00	\$149.00	\$24,138.00	\$148.00	\$23,976.00
9.	FINAL LOT AND RESERVE GRADING, COMPLETE IN PLACE	LS	1	\$19,000.00	\$19,000.00	\$29,352.00	\$29,352.00	\$10,000.00	\$10,000.00	\$38,000.00	\$38,000.00
10.	PERMANENT TRAFFIC CONTROL DEVICES, INCLUDES ALL TRAFFIC BUTTONS, PAVEMENT STRIPING, MARKERS, REFLECTIVE PAINT ON MEDIAN NOSES, STREET SIGNS, TRAFFIC SIGNS, ETC., COMPLETE IN PLACE	LS	1	\$5,900.00	\$5,900.00	\$9,200.00	\$9,200.00	\$10,000.00	\$10,000.00	\$12,462.58	\$12,462.58

BID TABULATION FOR:

CONSTRUCTION OF THE WATER, SANITARY SEWER AND DRAINAGE & PAVING AND APPURTENANCES TO SERVE MIDLINE SECTION 3

BID OPENING DATE:  
 BID OPENING LOCATION:  
 TABULATION BY:  
 TABULATION DATE:  
 LJA JOB NO.

BAYBROOK MUNICIPAL UTILITY DISTRICT NO. 1  
 CITY OF HOUSTON E.T.J., HARRIS COUNTY, TEXAS  
 MARCH 19, 2025  
 LJA ENGINEERING, INC.  
 E. MURPHY  
 MARCH 19, 2025  
 2535-2320 (9.2)

NO.	ITEM DESCRIPTION	UNIT	QTY	1) R CONSTRUCTION CIVIL, LLC		2) DACO PAVING, INC.		3) CE BARKER LTD.		4) HURTADO CONSTRUCTION COMPANY	
				UNIT COST	TOTAL	UNIT COST	TOTAL	UNIT COST	TOTAL	UNIT COST	TOTAL
11.	TEMPORARY TRAFFIC CONTROL DEVICES AS NEEDED FOR THE DURATION OF THE PROJECT, (FLAGGERS, CONES, ETC.), PER TMTUCD, INCLUDES INSTALLATION, MAINTENANCE, AND REMOVAL, COMPLETE IN PLACE	LS	1	\$1.00	\$1.00	\$500.00	\$500.00	\$10,000.00	\$10,000.00	\$8.00	\$8.00
12.	ADA RAMPS, INCLUDES TRUNCATED DOME PAVERS WITH CONTRASTING COLOR PER DETAIL, COMPLETE IN PLACE	EA	6	\$2,000.00	\$12,000.00	\$1,500.00	\$9,000.00	\$1,500.00	\$9,000.00	\$1,688.00	\$10,128.00
13.	TYPE III BARRICADE, COMPLETE IN PLACE	EA	1	\$1,200.00	\$1,200.00	\$1,300.00	\$1,300.00	\$1,300.00	\$1,300.00	\$1,800.00	\$1,800.00
14.	REINFORCED CONCRETE PAVING HEADER, COMPLETE IN PLACE	LF	28	\$23.00	\$644.00	\$17.00	\$476.00	\$50.00	\$1,400.00	\$28.00	\$784.00
15.	CONNECT PROPOSED 6" REINFORCED CONCRETE PAVEMENT TO EXISTING REINFORCED CONCRETE PAVEMENT, COMPLETE IN PLACE	LF	28	\$45.00	\$1,260.00	\$5.00	\$140.00	\$25.00	\$700.00	\$28.00	\$784.00
16.	REMOVE AND OFFSITE DISPOSAL OF EXISTING TYPE III BARRICADE, COMPLETE IN PLACE	EA	1	\$1.00	\$1.00	\$1.00	\$1.00	\$250.00	\$250.00	\$0.08	\$0.08
17.	DOUBLE REFLECTORIZED BLUE BUTTONS FOR FIRE HYDRANTS, COMPLETE IN PLACE	EA	5	\$15.00	\$75.00	\$17.00	\$85.00	\$25.00	\$125.00	\$18.00	\$90.00
<b>SUBTOTAL PAVING ITEMS - MIDLINE SECTION 3</b>					<b>\$611,030.00</b>		<b>\$650,462.75</b>		<b>\$571,372.00</b>		<b>\$705,943.44</b>
<b>MISCELLANEOUS WS&amp;D ITEMS - MIDLINE SECTION 3</b>											
1.	CEMENT STABILIZED SAND, 1.5 SACKS OF CEMENT PER CUBIC YARD OF MIX, (TO BE USED ONLY AT THE WRITTEN DIRECTION OF THE ENGINEER), ALL DEPTHS, COMPLETE IN PLACE	TON	1	\$20.00	\$20.00	\$30.00	\$30.00	\$57.12	\$57.12	\$40.00	\$40.00
2.	STORM WATER POLLUTION PREVENTION PLAN COMPLIANCE, INCLUDES GENERAL SOURCE CONTROLS AND ALL ITEMS NOT SPECIFICALLY LISTED IN THE BID PROPOSAL, COMPLETE IN PLACE	LS	1	\$250.00	\$250.00	\$7,728.01	\$7,728.01	\$714.00	\$714.00	\$1,800.00	\$1,800.00
3.	INLET PROTECTION BARRIER FOR STAGE I INLET, COMPLETE IN PLACE	EA	20	\$20.00	\$400.00	\$260.00	\$5,200.00	\$142.80	\$2,856.00	\$1.00	\$20.00
4.	INSTALL, MAINTAIN, AND REMOVE CONCRETE TRUCK WASHOUT AREA, COMPLETE IN PLACE	EA	1	\$250.00	\$250.00	\$1,000.00	\$1,000.00	\$1,071.00	\$1,071.00	\$1,800.00	\$1,800.00
5.	INSTALL, MAINTAIN, AND REMOVE STABILIZED CONSTRUCTION EXIT, AND REGRADE AREA TO MATCH FINISHED GRADE, COMPLETE IN PLACE	EA	1	\$750.00	\$750.00	\$1,500.00	\$1,500.00	\$2,142.00	\$2,142.00	\$80.00	\$80.00
6.	UTILITY SPOILS, INCLUDES HAULING EXCAVATED MATERIAL ONSITE, INCLUDES STRIPPING, STOCKPILING STRIPPINGS, PLACEMENT AND COMPACTION TO 95% STANDARD PROCTOR DENSITY, WITH MAXIMUM 8" LIFTS, FINAL GRADING, AND RE-APPLICATION OF STRIPPINGS, COMPLETE IN PLACE	LS	1	\$3,700.00	\$3,700.00	\$28,500.00	\$28,500.00	\$7,497.00	\$7,497.00	\$30,888.00	\$30,888.00
7.	ADDITIONAL COST TO HAUL UTILITY SPOILS FROM MIDLINE SECTION 3 OFF-SITE BUT WITHIN DEVELOPMENT, NO MORE THAN 3,500 FT (TO BE USED ONLY AT THE WRITTEN DIRECTION OF THE ENGINEER), INCLUDES STRIPPING, STOCK PILING OF STRIPPINGS, EMBANKMENT, AND REAPPLYING OF STRIPPINGS TO FINAL GRADE AREA, COMPLETE IN PLACE	CY	1000	\$3.00	\$3,000.00	\$3.25	\$3,250.00	\$7.14	\$7,140.00	\$4.00	\$4,000.00
8.	SURFACE WATER CONTROL, INCLUDES PUMPING REQUIRED TO CONSTRUCT PROPOSED PROJECT, (TO BE USED ONLY AT THE WRITTEN DIRECTION OF THE ENGINEER), COMPLETE IN PLACE	LS	1	\$2,200.00	\$2,200.00	\$500.00	\$500.00	\$3,748.50	\$3,748.50	\$8.00	\$8.00
9.	ADDITIONAL DUCTILE IRON FITTINGS, ALL DEPTHS, COMPLETE IN PLACE	TON	2	\$1.00	\$2.00	\$500.00	\$1,000.00	\$1,428.00	\$2,856.00	\$1,000.00	\$2,000.00

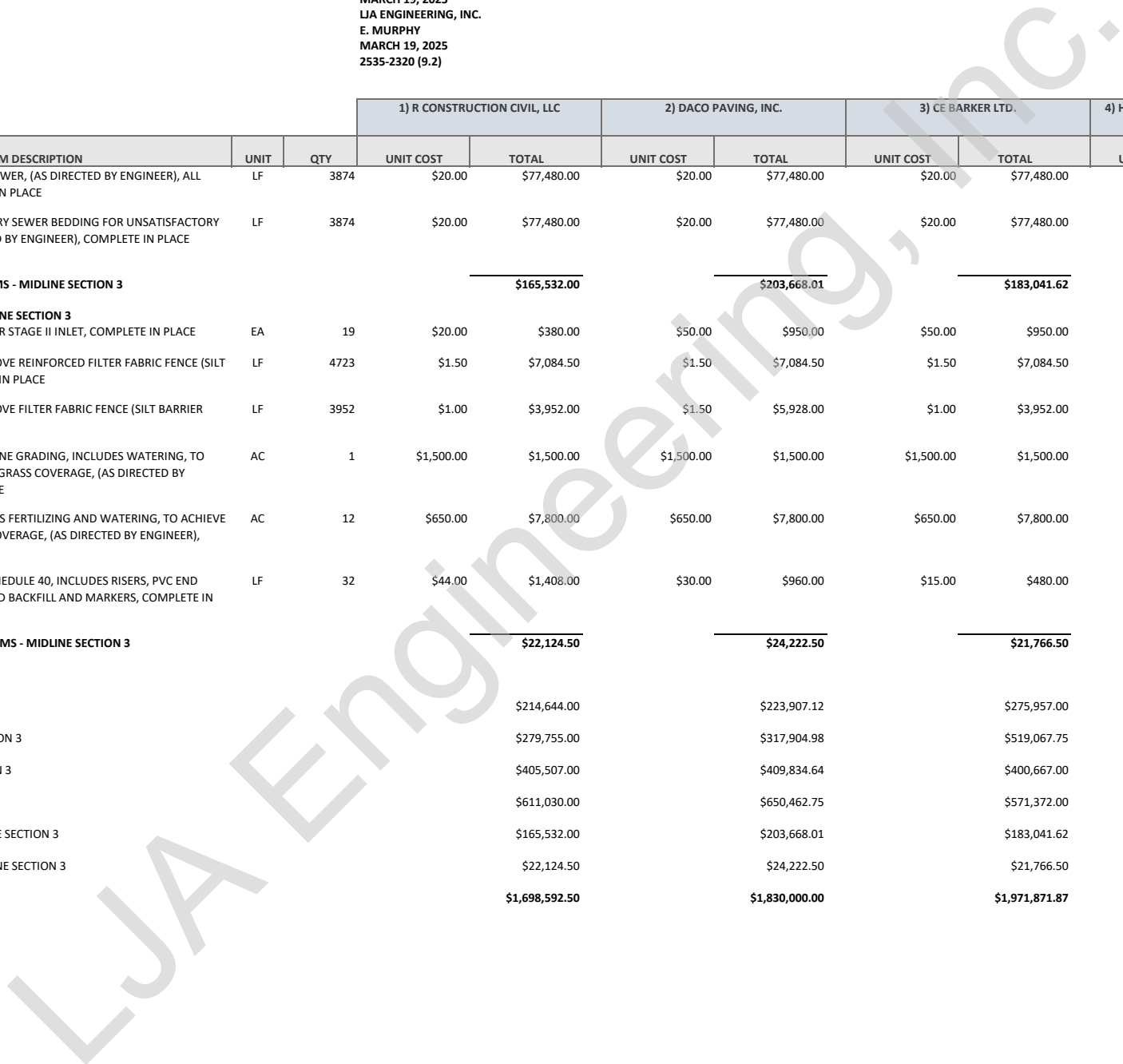
**BID TABULATION FOR:**

**CONSTRUCTION OF THE WATER, SANITARY SEWER AND DRAINAGE & PAVING AND APPURTENANCES TO SERVE MIDLINE SECTION 3**

**BID OPENING DATE:**  
**BID OPENING LOCATION:**  
**TABULATION BY:**  
**TABULATION DATE:**  
**LJA JOB NO.**

**BAYBROOK MUNICIPAL UTILITY DISTRICT NO. 1**  
**CITY OF HOUSTON E.T.J., HARRIS COUNTY, TEXAS**  
**MARCH 19, 2025**  
**LJA ENGINEERING, INC.**  
**E. MURPHY**  
**MARCH 19, 2025**  
**2535-2320 (9.2)**

NO.	ITEM DESCRIPTION	UNIT	QTY	1) R CONSTRUCTION CIVIL, LLC		2) DACO PAVING, INC.		3) CE BARKER LTD.		4) HURTADO CONSTRUCTION COMPANY	
				UNIT COST	TOTAL	UNIT COST	TOTAL	UNIT COST	TOTAL	UNIT COST	TOTAL
10.	DEWATERING FOR SANITARY SEWER, (AS DIRECTED BY ENGINEER), ALL SIZES, ALL DEPTHS, COMPLETE IN PLACE	LF	3874	\$20.00	\$77,480.00	\$20.00	\$77,480.00	\$20.00	\$77,480.00	\$20.00	\$77,480.00
11.	ADDITIONAL COST FOR SANITARY SEWER BEDDING FOR UNSATISFACTORY SOIL CONDITIONS (AS DIRECTED BY ENGINEER), COMPLETE IN PLACE	LF	3874	\$20.00	\$77,480.00	\$20.00	\$77,480.00	\$20.00	\$77,480.00	\$20.00	\$77,480.00
<b>SUBTOTAL MISCELLANEOUS WS&amp;D ITEMS - MIDLINE SECTION 3</b>					<b>\$165,532.00</b>		<b>\$203,668.01</b>		<b>\$183,041.62</b>		<b>\$195,596.00</b>
<b>MISCELLANEOUS PAVING ITEMS - MIDLINE SECTION 3</b>											
1.	INLET PROTECTION BARRIER FOR STAGE II INLET, COMPLETE IN PLACE	EA	19	\$20.00	\$380.00	\$50.00	\$950.00	\$50.00	\$950.00	\$1.00	\$19.00
2.	INSTALL, MAINTAIN, AND REMOVE REINFORCED FILTER FABRIC FENCE (SILT BARRIER FENCING), COMPLETE IN PLACE	LF	4723	\$1.50	\$7,084.50	\$1.50	\$7,084.50	\$1.50	\$7,084.50	\$1.50	\$7,084.50
3.	INSTALL, MAINTAIN, AND REMOVE FILTER FABRIC FENCE (SILT BARRIER FENCING), COMPLETE IN PLACE	LF	3952	\$1.00	\$3,952.00	\$1.50	\$5,928.00	\$1.00	\$3,952.00	\$1.00	\$3,952.00
4.	HYDROMULCH SEEDING AND FINE GRADING, INCLUDES WATERING, TO ACHIEVE 90% HOMOGENEOUS GRASS COVERAGE, (AS DIRECTED BY ENGINEER), COMPLETE IN PLACE	AC	1	\$1,500.00	\$1,500.00	\$1,500.00	\$1,500.00	\$1,500.00	\$1,500.00	\$1,500.00	\$1,500.00
5.	BROADCAST SEEDING, INCLUDES FERTILIZING AND WATERING, TO ACHIEVE 90% HOMOGENEOUS GRASS COVERAGE, (AS DIRECTED BY ENGINEER), COMPLETE IN PLACE	AC	12	\$650.00	\$7,800.00	\$650.00	\$7,800.00	\$650.00	\$7,800.00	\$650.00	\$7,800.00
6.	4" PVC IRRIGATION SLEEVE, SCHEDULE 40, INCLUDES RISERS, PVC END CAPS, CEMENT STABILIZED SAND BACKFILL AND MARKERS, COMPLETE IN PLACE	LF	32	\$44.00	\$1,408.00	\$30.00	\$960.00	\$15.00	\$480.00	\$32.00	\$1,024.00
<b>SUBTOTAL MISCELLANEOUS PAVING ITEMS - MIDLINE SECTION 3</b>					<b>\$22,124.50</b>		<b>\$24,222.50</b>		<b>\$21,766.50</b>		<b>\$21,379.50</b>
<b>BID SUMMARY</b>											
WATER ITEMS - MIDLINE SECTION 3					\$214,644.00		\$223,907.12		\$275,957.00		\$246,140.00
SANITARY SEWER ITEMS- MIDLINE SECTION 3					\$279,755.00		\$317,904.98		\$519,067.75		\$398,933.00
STORM SEWER ITEMS - MIDLINE SECTION 3					\$405,507.00		\$409,834.64		\$400,667.00		\$430,176.94
PAVING ITEMS - MIDLINE SECTION 3					\$611,030.00		\$650,462.75		\$571,372.00		\$705,943.44
MISCELLANEOUS WS&D ITEMS - MIDLINE SECTION 3					\$165,532.00		\$203,668.01		\$183,041.62		\$195,596.00
MISCELLANEOUS PAVING ITEMS - MIDLINE SECTION 3					\$22,124.50		\$24,222.50		\$21,766.50		\$21,379.50
<b>TOTAL AMOUNT BASE BID</b>					<b>\$1,698,592.50</b>		<b>\$1,830,000.00</b>		<b>\$1,971,871.87</b>		<b>\$1,998,168.88</b>



**BID TABULATION FOR:**

**CONSTRUCTION OF THE WATER, SANITARY SEWER AND DRAINAGE & PAVING AND APPURTENANCES TO SERVE MIDLINE SECTION 3**

**BID OPENING DATE:**  
**BID OPENING LOCATION:**  
**TABULATION BY:**  
**TABULATION DATE:**  
**LJA JOB NO.**

**BAYBROOK MUNICIPAL UTILITY DISTRICT NO. 1**  
**CITY OF HOUSTON E.T.J., HARRIS COUNTY, TEXAS**  
**MARCH 19, 2025**  
**LJA ENGINEERING, INC.**  
**E. MURPHY**  
**MARCH 19, 2025**  
**2535-2320 (9.2)**

				5) PRINCIPAL SERVICES, LTD	
NO.	ITEM DESCRIPTION	UNIT	QTY	UNIT COST	TOTAL
<b>WATER ITEMS - MIDLINE SECTION 3</b>					
1.	12" PVC WATER LINE, C-900, DR 18, CLASS 235, INCLUDES FITTINGS, BEDDING AND BACKFILL, ALL DEPTHS, COMPLETE IN PLACE	LF	1000	\$73.00	\$73,000.00
2.	8" PVC WATER LINE, C-900, DR 18, CLASS 235, INCLUDES FITTINGS, BEDDING AND BACKFILL, ALL DEPTHS, COMPLETE IN PLACE	LF	1387	\$42.00	\$58,254.00
3.	12" PVC RESTRAINED JOINT WATER LINE, C-900, DR 14, CLASS 305, INCLUDES RESTRAINED JOINT FITTINGS, BEDDING AND BACKFILL, ALL DEPTHS, COMPLETE IN PLACE	LF	230	\$124.00	\$28,520.00
4.	8" PVC RESTRAINED JOINT WATER LINE, C-900, DR 14, CLASS 305, INCLUDES RESTRAINED JOINT FITTINGS, BEDDING AND BACKFILL, ALL DEPTHS, COMPLETE IN PLACE	LF	237	\$73.00	\$17,301.00
5.	12" AWWA GATE VALVE & BOX, COMPLETE IN PLACE	EA	4	\$4,525.00	\$18,100.00
6.	8" AWWA GATE VALVE & BOX, COMPLETE IN PLACE	EA	4	\$2,371.00	\$9,484.00
7.	12" PLUG & CLAMP WITH 2" BLOW-OFF VALVE & BOX ASSEMBLY, COMPLETE IN PLACE	EA	1	\$1,223.00	\$1,223.00
8.	8" PLUG & CLAMP WITH 2" BLOW-OFF VALVE & BOX ASSEMBLY, COMPLETE IN PLACE	EA	1	\$918.00	\$918.00
9.	FLUSHING VALVE UNIT, INCLUDES APPROPRIATE TEE, FITTINGS, 6" GATE VALVE & BOX, AND LEAD PIPE, ALL DEPTHS, COMPLETE IN PLACE	EA	5	\$7,321.00	\$36,605.00
10.	WET CONNECTION OF PROPOSED 12" WATER LINE TO EXISTING WATER LINE, INCLUDES FITTINGS, ALL ADAPTERS AND CONNECTORS NECESSARY, AND REMOVAL OF EXISTING PLUG & CLAMP AND 2" BLOW-OFF VALVE & BOX, ALL DEPTHS, COMPLETE IN PLACE	EA	1	\$1,143.00	\$1,143.00
11.	TRENCH SAFETY SYSTEM FOR WATER LINE, INCLUDES ALL LATERAL LEADS, ALL SIZES, ALL DEPTHS, COMPLETE IN PLACE	LF	2806	\$0.10	\$280.60
12.	ADJUST THE EXISTING WATER VALVE, WATER MANHOLE, FIRE HYDRANT, AIR RELEASE VALVE, AND MANHOLE TO THE PROPOSED GRADES. COMPLETE IN PLACE	LS	1	\$1,650.00	\$1,650.00
<b>SUBTOTAL WATER ITEMS - MIDLINE SECTION 3</b>					<b>\$246,478.60</b>
<b>SANITARY SEWER ITEMS- MIDLINE SECTION 3</b>					
1.	10" PVC SEWER PIPE, ASTM D-2241, SDR 26, 8' - 12' CUT, INCLUDES BEDDING AND BACKFILL, COMPLETE IN PLACE	LF	1233	\$57.00	\$70,281.00
2.	8" PVC SEWER PIPE, ASTM D-2241, SDR 26, 8' - 12' CUT, INCLUDES BEDDING AND BACKFILL, COMPLETE IN PLACE	LF	1172	\$47.00	\$55,084.00
3.	LONG SIDE DOUBLE OR SINGLE 6" PVC PIPE SERVICE LEAD, ASTM D-2241, SDR 26, INCLUDES PIPE, CEMENT STABILIZED SAND BACKFILL, DROP STRUCTURE, STACK, RISER, WYE, PLUG, MARKER, AND ANY NECESSARY FITTINGS, ALL DEPTHS, COMPLETE IN PLACE	LF	826	\$46.00	\$37,996.00
4.	LONG SIDE DOUBLE OR SINGLE 8" PVC PIPE SERVICE LEAD, ASTM D-2241, SDR 26, INCLUDES PIPE, CEMENT STABILIZED SAND BACKFILL, DROP STRUCTURE, STACK, RISER, WYE, PLUG, MARKER, AND ANY NECESSARY FITTINGS, ALL DEPTHS, COMPLETE IN PLACE	LF	106	\$50.00	\$5,300.00

**BID TABULATION FOR:**

**CONSTRUCTION OF THE WATER, SANITARY SEWER AND DRAINAGE & PAVING AND APPURTENANCES TO SERVE MIDLINE SECTION 3**

**BID OPENING DATE:**  
**BID OPENING LOCATION:**  
**TABULATION BY:**  
**TABULATION DATE:**  
**LJA JOB NO.**

**BAYBROOK MUNICIPAL UTILITY DISTRICT NO. 1**  
**CITY OF HOUSTON E.T.J., HARRIS COUNTY, TEXAS**  
**MARCH 19, 2025**  
**LJA ENGINEERING, INC.**  
**E. MURPHY**  
**MARCH 19, 2025**  
**2535-2320 (9.2)**

5) PRINCIPAL SERVICES, LTD					
NO.	ITEM DESCRIPTION	UNIT	QTY	UNIT COST	TOTAL
5.	SHORT SIDE SINGLE 6" PVC PIPE SERVICE LEAD, ASTM D-2241, SDR 26, INCLUDES PIPE, CEMENT STABILIZED SAND BACKFILL, DROP STRUCTURE, STACK, RISER, WYE, PLUG, MARKER, AND ANY NECESSARY FITTINGS, ALL DEPTHS, COMPLETE IN PLACE	EA	29	\$2,192.00	\$63,568.00
6.	STANDARD 4' DIAMETER PRECAST SANITARY SEWER MANHOLE, (0' - 8' DEPTH), INCLUDES ADJUSTMENTS, COMPLETE IN PLACE	EA	13	\$6,466.15	\$84,059.95
7.	EXTRA VERTICAL DEPTH FOR 4' DIAMETER SANITARY SEWER MANHOLE (OVER 8' DEPTH), COMPLETE IN PLACE	VF	41	\$219.00	\$8,979.00
8.	STANDARD 4' DIAMETER PRECAST SANITARY SEWER MANHOLE, SEALED AND VENTED, (0' - 8' DEPTH), INCLUDES PROTECTIVE INTERIOR COATING AND ADJUSTMENTS, COMPLETE IN PLACE	EA	1	\$7,000.00	\$7,000.00
9.	REMOVE AND OFFSITE DISPOSAL OF EXISTING 10" PLUG AND CONNECT PROPOSED 10" SANITARY SEWER, ALL DEPTHS, COMPLETE IN PLACE	EA	1	\$233.00	\$233.00
10.	VIDEO INSPECTION OF SANITARY SEWER, ALL SIZES, INCLUDES DIGITAL COPY, COMPLETE IN PLACE	LF	2405	\$0.10	\$240.50
11.	TRENCH SAFETY SYSTEM FOR SANITARY SEWER, INCLUDES ALL LATERAL LEADS, ALL SIZES, ALL DEPTHS, COMPLETE IN PLACE	LF	3874	\$0.10	\$387.40

**SUBTOTAL SANITARY SEWER ITEMS- MIDLINE SECTION 3**

**\$333,128.85**

**STORM SEWER ITEMS - MIDLINE SECTION 3**

1.	24" RCP STORM SEWER, ASTM C-76, CLASS III, INCLUDES BEDDING AND BACKFILL, ALL DEPTHS, COMPLETE IN PLACE	LF	1704	\$106.00	\$180,624.00
2.	30" RCP STORM SEWER, ASTM C-76, CLASS III, INCLUDES BEDDING AND BACKFILL, ALL DEPTHS, COMPLETE IN PLACE	LF	237	\$130.00	\$30,810.00
3.	36" RCP STORM SEWER, ASTM C-76, CLASS III, INCLUDES BEDDING AND BACKFILL, ALL DEPTHS, COMPLETE IN PLACE	LF	383	\$192.00	\$73,536.00
4.	42" RCP STORM SEWER, ASTM C-76, CLASS III, INCLUDES BEDDING AND BACKFILL, ALL DEPTHS, COMPLETE IN PLACE	LF	8	\$272.00	\$2,176.00
5.	STAGE I - REINFORCED CONCRETE "B-B" INLET, (5' OPENING), INCLUDES INLET PROTECTION BARRIER FOR STAGE I INLET, ALL DEPTHS, COMPLETE IN PLACE	EA	19	\$1,600.00	\$30,400.00
6.	STAGE II - REINFORCED CONCRETE "B-B" INLET, (5' OPENING), ALL DEPTHS, COMPLETE IN PLACE	EA	19	\$3,231.00	\$61,389.00
7.	STAGE I - MODIFIED TYPE REINFORCED CONCRETE "C-1" INLET, (10' MINIMUM INSIDE OPENING), INCLUDES INLET PROTECTION BARRIER FOR STAGE I INLET, ALL DEPTHS, COMPLETE IN PLACE	EA	1	\$1,665.00	\$1,665.00
8.	STAGE II - MODIFIED REINFORCED CONCRETE TYPE "C-1" INLET, (10' MINIMUM INSIDE OPENING), ALL DEPTHS, COMPLETE IN PLACE	EA	1	\$3,137.00	\$3,137.00
9.	REINFORCED CONCRETE TYPE "C" MANHOLE FOR 42" STORM SEWER AND SMALLER, INCLUDES ADJUSTMENTS, ALL DEPTHS, COMPLETE IN PLACE	EA	17	\$3,576.00	\$60,792.00



**BID TABULATION FOR:**

**CONSTRUCTION OF THE WATER, SANITARY SEWER AND DRAINAGE & PAVING AND APPURTENANCES TO SERVE MIDLINE SECTION 3**

**BID OPENING DATE:**  
**BID OPENING LOCATION:**  
**TABULATION BY:**  
**TABULATION DATE:**  
**LJA JOB NO.**

**BAYBROOK MUNICIPAL UTILITY DISTRICT NO. 1**  
**CITY OF HOUSTON E.T.J., HARRIS COUNTY, TEXAS**  
**MARCH 19, 2025**  
**LJA ENGINEERING, INC.**  
**E. MURPHY**  
**MARCH 19, 2025**  
**2535-2320 (9.2)**

5) PRINCIPAL SERVICES, LTD					
NO.	ITEM DESCRIPTION	UNIT	QTY	UNIT COST	TOTAL
10.	REINFORCED CONCRETE TYPE "C" MANHOLE FOR 48" STORM SEWER AND LARGER, INCLUDES ADJUSTMENTS, ALL DEPTHS, COMPLETE IN PLACE	EA	1	\$5,340.00	\$5,340.00
11.	BREAK INTO EXISTING STORM SEWER MANHOLE AND CONNECT PROPOSED 30" STORM SEWER, INCLUDES APPURTENANCES, ALL DEPTHS, COMPLETE IN PLACE	EA	1	\$703.00	\$703.00
12.	BREAK INTO EXISTING STORM SEWER MANHOLE AND CONNECT PROPOSED 36" STORM SEWER, INCLUDES APPURTENANCES, ALL DEPTHS, COMPLETE IN PLACE	EA	1	\$703.00	\$703.00
13.	BREAK INTO EXISTING STORM SEWER MANHOLE AND CONNECT PROPOSED 42" STORM SEWER, INCLUDES APPURTENANCES, ALL DEPTHS, COMPLETE IN PLACE	EA	1	\$703.00	\$703.00
14.	REMOVE EXISTING REINFORCED CONCRETE TYPE "E" INLET TOP AND REPLACE WITH TYPE "C" STORM MANHOLE TOP, FOR 42" STORM SEWER AND SMALLER, ALL DEPTHS, COMPLETE IN PLACE	EA	1	\$4,523.00	\$4,523.00
15.	TRENCH SAFETY SYSTEM FOR STORM SEWER, ALL SIZES, ALL DEPTHS, COMPLETE IN PLACE	LF	2332	\$0.10	\$233.20
<b>SUBTOTAL STORM SEWER ITEMS - MIDLINE SECTION 3</b>					<b>\$456,734.20</b>
<b>PAVING ITEMS - MIDLINE SECTION 3</b>					
1.	6" REINFORCED CONCRETE PAVEMENT, COMPLETE IN PLACE	SY	8295	\$63.00	\$522,585.00
2.	4" X 12" REINFORCED CONCRETE CURB, COMPLETE IN PLACE	LF	3500	\$4.50	\$15,750.00
3.	6" REINFORCED CONCRETE CURB, COMPLETE IN PLACE	LF	1300	\$4.50	\$5,850.00
4.	EMBANKMENT, INCLUDES DEMUCKING, REMOVING AND DISPOSING OF EXISTING UNSUITABLE MATERIAL BEFORE PLACING FILL, HAULING, STRIPPING, STOCKPILING STRIPPINGS, PROOFROLLING, RE-APPLICATION OF STRIPPINGS TO FILL AREA, PLACEMENT AND COMPACTION TO 95% STANDARD PROCTOR DENSITY, WITH MAXIMUM 8" LIFTS, AND FINAL GRADING, COMPLETE IN PLACE	CY	11400	\$4.00	\$45,600.00
5.	ROADWAY AND LOT EXCAVATION, INCLUDES STRIPPING, STOCKPILING AND RE-APPLICATION OF STRIPPINGS TO APPLICABLE AREAS, COMPLETE IN PLACE	CY	11400	\$3.00	\$34,200.00
6.	6" LIME/FLY ASH STABILIZED SUBGRADE MANIPULATION, COMPLETE IN PLACE	SY	9361	\$4.00	\$37,444.00
7.	HYDRATED LIME FOR 6" STABILIZED SUBGRADE PREPARATION, 3% BY DRY WEIGHT, AS REQUIRED BY SOIL CONDITIONS AND APPROVED BY GEOTECHNICAL ENGINEER, COMPLETE IN PLACE	TON	70	\$350.00	\$24,500.00
8.	FLY ASH FOR 6" STABILIZED SUBGRADE PREPARATION, 7% BY DRY WEIGHT, AS REQUIRED BY SOIL CONDITIONS AND APPROVED BY GEOTECHNICAL ENGINEER, COMPLETE IN PLACE	TON	162	\$150.00	\$24,300.00
9.	FINAL LOT AND RESERVE GRADING, COMPLETE IN PLACE	LS	1	\$25,000.00	\$25,000.00
10.	PERMANENT TRAFFIC CONTROL DEVICES, INCLUDES ALL TRAFFIC BUTTONS, PAVEMENT STRIPING, MARKERS, REFLECTIVE PAINT ON MEDIAN NOSES, STREET SIGNS, TRAFFIC SIGNS, ETC., COMPLETE IN PLACE	LS	1	\$10,000.00	\$10,000.00

**BID TABULATION FOR:**

**CONSTRUCTION OF THE WATER, SANITARY SEWER AND DRAINAGE & PAVING AND APPURTENANCES TO SERVE MIDLINE SECTION 3**

**BID OPENING DATE:**  
**BID OPENING LOCATION:**  
**TABULATION BY:**  
**TABULATION DATE:**  
**LJA JOB NO.**

**BAYBROOK MUNICIPAL UTILITY DISTRICT NO. 1**  
**CITY OF HOUSTON E.T.J., HARRIS COUNTY, TEXAS**  
**MARCH 19, 2025**  
**LJA ENGINEERING, INC.**  
**E. MURPHY**  
**MARCH 19, 2025**  
**2535-2320 (9.2)**

5) PRINCIPAL SERVICES, LTD					
NO.	ITEM DESCRIPTION	UNIT	QTY	UNIT COST	TOTAL
11.	TEMPORARY TRAFFIC CONTROL DEVICES AS NEEDED FOR THE DURATION OF THE PROJECT, (FLAGGERS, CONES, ETC.), PER TMUTCD, INCLUDES INSTALLATION, MAINTENANCE, AND REMOVAL, COMPLETE IN PLACE	LS	1	\$5,000.00	\$5,000.00
12.	ADA RAMPS, INCLUDES TRUNCATED DOME PAVERS WITH CONTRASTING COLOR PER DETAIL, COMPLETE IN PLACE	EA	6	\$1,900.00	\$11,400.00
13.	TYPE III BARRICADE, COMPLETE IN PLACE	EA	1	\$1,000.00	\$1,000.00
14.	REINFORCED CONCRETE PAVING HEADER, COMPLETE IN PLACE	LF	28	\$50.00	\$1,400.00
15.	CONNECT PROPOSED 6" REINFORCED CONCRETE PAVEMENT TO EXISTING REINFORCED CONCRETE PAVEMENT, COMPLETE IN PLACE	LF	28	\$50.00	\$1,400.00
16.	REMOVE AND OFFSITE DISPOSAL OF EXISTING TYPE III BARRICADE, COMPLETE IN PLACE	EA	1	\$50.00	\$50.00
17.	DOUBLE REFLECTORIZED BLUE BUTTONS FOR FIRE HYDRANTS, COMPLETE IN PLACE	EA	5	\$10.00	\$50.00

**SUBTOTAL PAVING ITEMS - MIDLINE SECTION 3** **\$765,529.00**

**MISCELLANEOUS WS&D ITEMS - MIDLINE SECTION 3**

1.	CEMENT STABILIZED SAND, 1.5 SACKS OF CEMENT PER CUBIC YARD OF MIX, (TO BE USED ONLY AT THE WRITTEN DIRECTION OF THE ENGINEER), ALL DEPTHS, COMPLETE IN PLACE	TON	1	\$15.00	\$15.00
2.	STORM WATER POLLUTION PREVENTION PLAN COMPLIANCE, INCLUDES GENERAL SOURCE CONTROLS AND ALL ITEMS NOT SPECIFICALLY LISTED IN THE BID PROPOSAL, COMPLETE IN PLACE	LS	1	\$500.00	\$500.00
3.	INLET PROTECTION BARRIER FOR STAGE I INLET, COMPLETE IN PLACE	EA	20	\$0.10	\$2.00
4.	INSTALL, MAINTAIN, AND REMOVE CONCRETE TRUCK WASHOUT AREA, COMPLETE IN PLACE	EA	1	\$500.00	\$500.00
5.	INSTALL, MAINTAIN, AND REMOVE STABILIZED CONSTRUCTION EXIT, AND REGRADE AREA TO MATCH FINISHED GRADE, COMPLETE IN PLACE	EA	1	\$1,000.00	\$1,000.00
6.	UTILITY SPOILS, INCLUDES HAULING EXCAVATED MATERIAL ONSITE, INCLUDES STRIPPING, STOCKPILING STRIPPINGS, PLACEMENT AND COMPACTION TO 95% STANDARD PROCTOR DENSITY, WITH MAXIMUM 8" LIFTS, FINAL GRADING, AND RE-APPLICATION OF STRIPPINGS, COMPLETE IN PLACE	LS	1	\$16,293.00	\$16,293.00
7.	ADDITIONAL COST TO HAUL UTILITY SPOILS FROM MIDLINE SECTION 3 OFF-SITE BUT WITHIN DEVELOPMENT, NO MORE THAN 3,500 FT (TO BE USED ONLY AT THE WRITTEN DIRECTION OF THE ENGINEER), INCLUDES STRIPPING, STOCK PILING OF STRIPPINGS, EMBANKMENT, AND REAPPLYING OF STRIPPINGS TO FINAL GRADE AREA, COMPLETE IN PLACE	CY	1000	\$5.00	\$5,000.00
8.	SURFACE WATER CONTROL, INCLUDES PUMPING REQUIRED TO CONSTRUCT PROPOSED PROJECT, (TO BE USED ONLY AT THE WRITTEN DIRECTION OF THE ENGINEER), COMPLETE IN PLACE	LS	1	\$500.00	\$500.00
9.	ADDITIONAL DUCTILE IRON FITTINGS, ALL DEPTHS, COMPLETE IN PLACE	TON	2	\$1,000.00	\$2,000.00

**BID TABULATION FOR:**

**CONSTRUCTION OF THE WATER, SANITARY SEWER AND DRAINAGE & PAVING AND APPURTENANCES TO SERVE MIDLINE SECTION 3**

**BID OPENING DATE:**  
**BID OPENING LOCATION:**  
**TABULATION BY:**  
**TABULATION DATE:**  
**LJA JOB NO.**

**BAYBROOK MUNICIPAL UTILITY DISTRICT NO. 1**  
**CITY OF HOUSTON E.T.J., HARRIS COUNTY, TEXAS**  
**MARCH 19, 2025**  
**LJA ENGINEERING, INC.**  
**E. MURPHY**  
**MARCH 19, 2025**  
**2535-2320 (9.2)**

5) PRINCIPAL SERVICES, LTD					
NO.	ITEM DESCRIPTION	UNIT	QTY	UNIT COST	TOTAL
10.	DEWATERING FOR SANITARY SEWER, (AS DIRECTED BY ENGINEER), ALL SIZES, ALL DEPTHS, COMPLETE IN PLACE	LF	3874	\$25.00	\$96,850.00
11.	ADDITIONAL COST FOR SANITARY SEWER BEDDING FOR UNSATISFACTORY SOIL CONDITIONS (AS DIRECTED BY ENGINEER), COMPLETE IN PLACE	LF	3874	\$20.00	\$77,480.00
<b>SUBTOTAL MISCELLANEOUS WS&amp;D ITEMS - MIDLINE SECTION 3</b>					<b>\$200,140.00</b>
<b>MISCELLANEOUS PAVING ITEMS - MIDLINE SECTION 3</b>					
1.	INLET PROTECTION BARRIER FOR STAGE II INLET, COMPLETE IN PLACE	EA	19	\$50.00	\$950.00
2.	INSTALL, MAINTAIN, AND REMOVE REINFORCED FILTER FABRIC FENCE (SILT BARRIER FENCING), COMPLETE IN PLACE	LF	4723	\$1.50	\$7,084.50
3.	INSTALL, MAINTAIN, AND REMOVE FILTER FABRIC FENCE (SILT BARRIER FENCING), COMPLETE IN PLACE	LF	3952	\$1.00	\$3,952.00
4.	HYDROMULCH SEEDING AND FINE GRADING, INCLUDES WATERING, TO ACHIEVE 90% HOMOGENEOUS GRASS COVERAGE, (AS DIRECTED BY ENGINEER), COMPLETE IN PLACE	AC	1	\$1,500.00	\$1,500.00
5.	BROADCAST SEEDING, INCLUDES FERTILIZING AND WATERING, TO ACHIEVE 90% HOMOGENEOUS GRASS COVERAGE, (AS DIRECTED BY ENGINEER), COMPLETE IN PLACE	AC	12	\$650.00	\$7,800.00
6.	4" PVC IRRIGATION SLEEVE, SCHEDULE 40, INCLUDES RISERS, PVC END CAPS, CEMENT STABILIZED SAND BACKFILL AND MARKERS, COMPLETE IN PLACE	LF	32	\$39.00	\$1,248.00
<b>SUBTOTAL MISCELLANEOUS PAVING ITEMS - MIDLINE SECTION 3</b>					<b>\$22,534.50</b>
<b>BID SUMMARY</b>					
WATER ITEMS - MIDLINE SECTION 3					\$246,478.60
SANITARY SEWER ITEMS- MIDLINE SECTION 3					\$333,128.85
STORM SEWER ITEMS - MIDLINE SECTION 3					\$456,734.20
PAVING ITEMS - MIDLINE SECTION 3					\$765,529.00
MISCELLANEOUS WS&D ITEMS - MIDLINE SECTION 3					\$200,140.00
MISCELLANEOUS PAVING ITEMS - MIDLINE SECTION 3					\$22,534.50
<b>TOTAL AMOUNT BASE BID</b>					<b>\$2,024,545.15</b>

